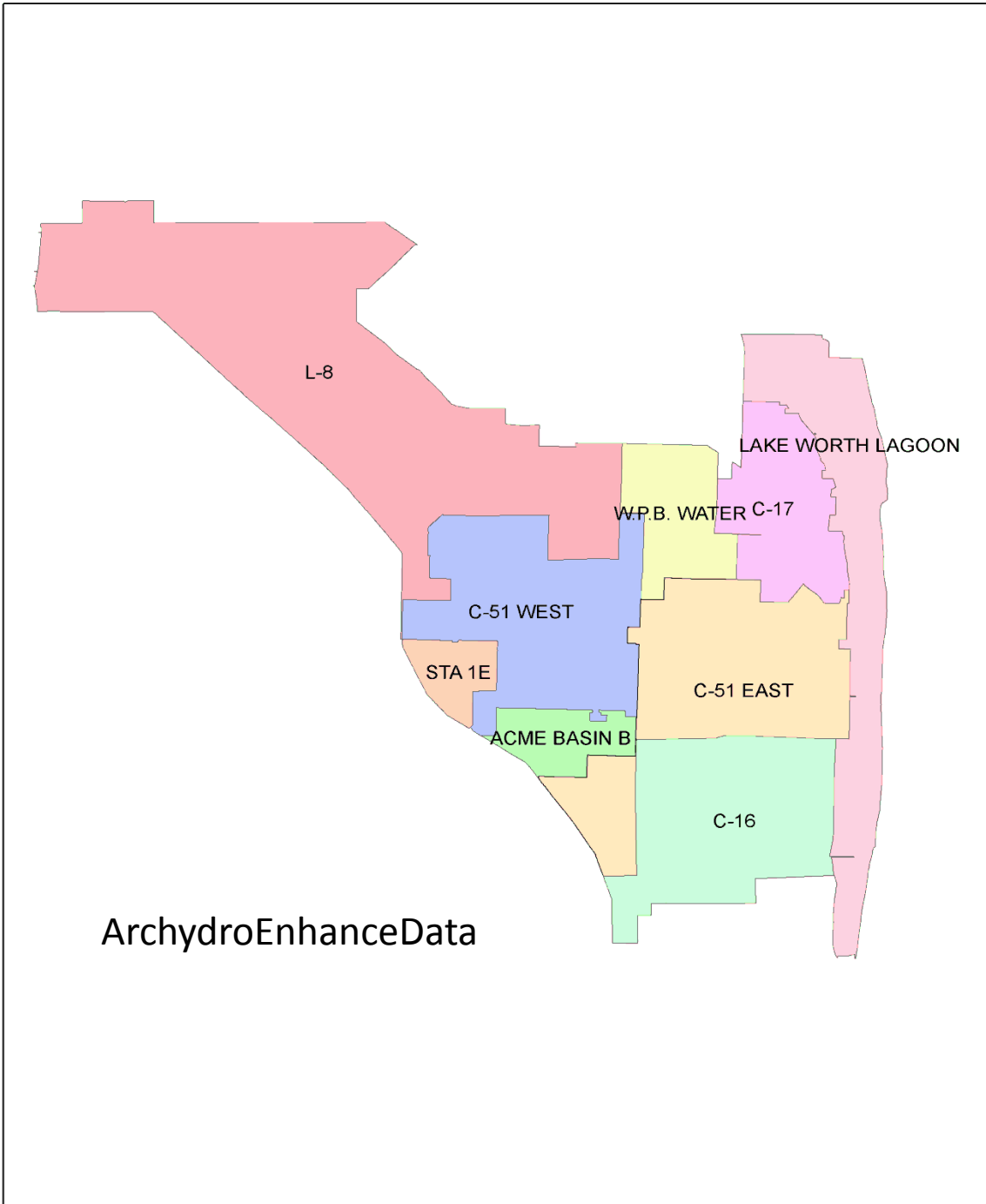


Gislib/vector/district/



L-8

LAKE WORTH LAGOON

W.P.B. WATER C-17

C-51 WEST

STA 1E

ACME BASIN B

C-51 EAST

C-16

ArchhydroEnhanceData

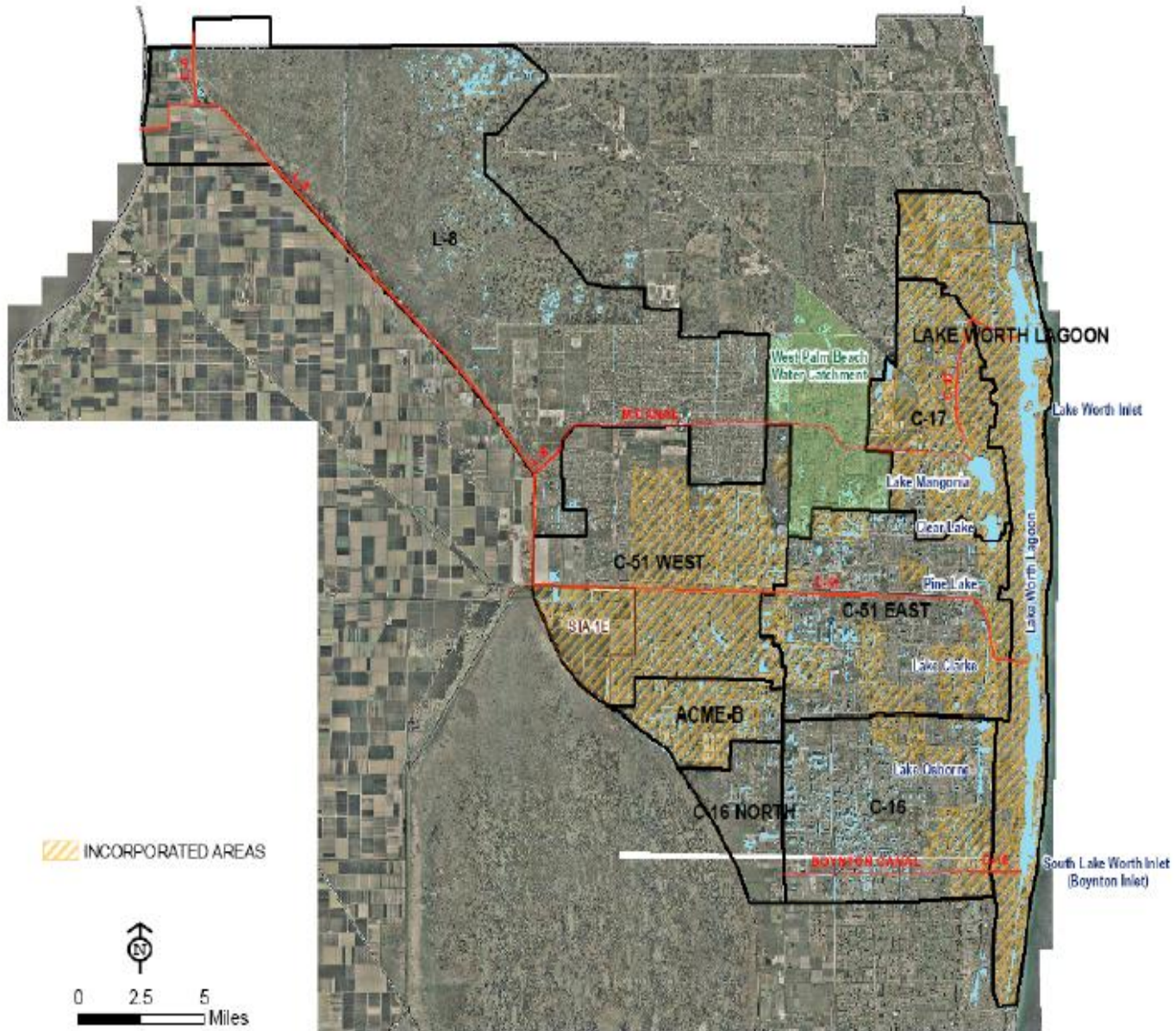
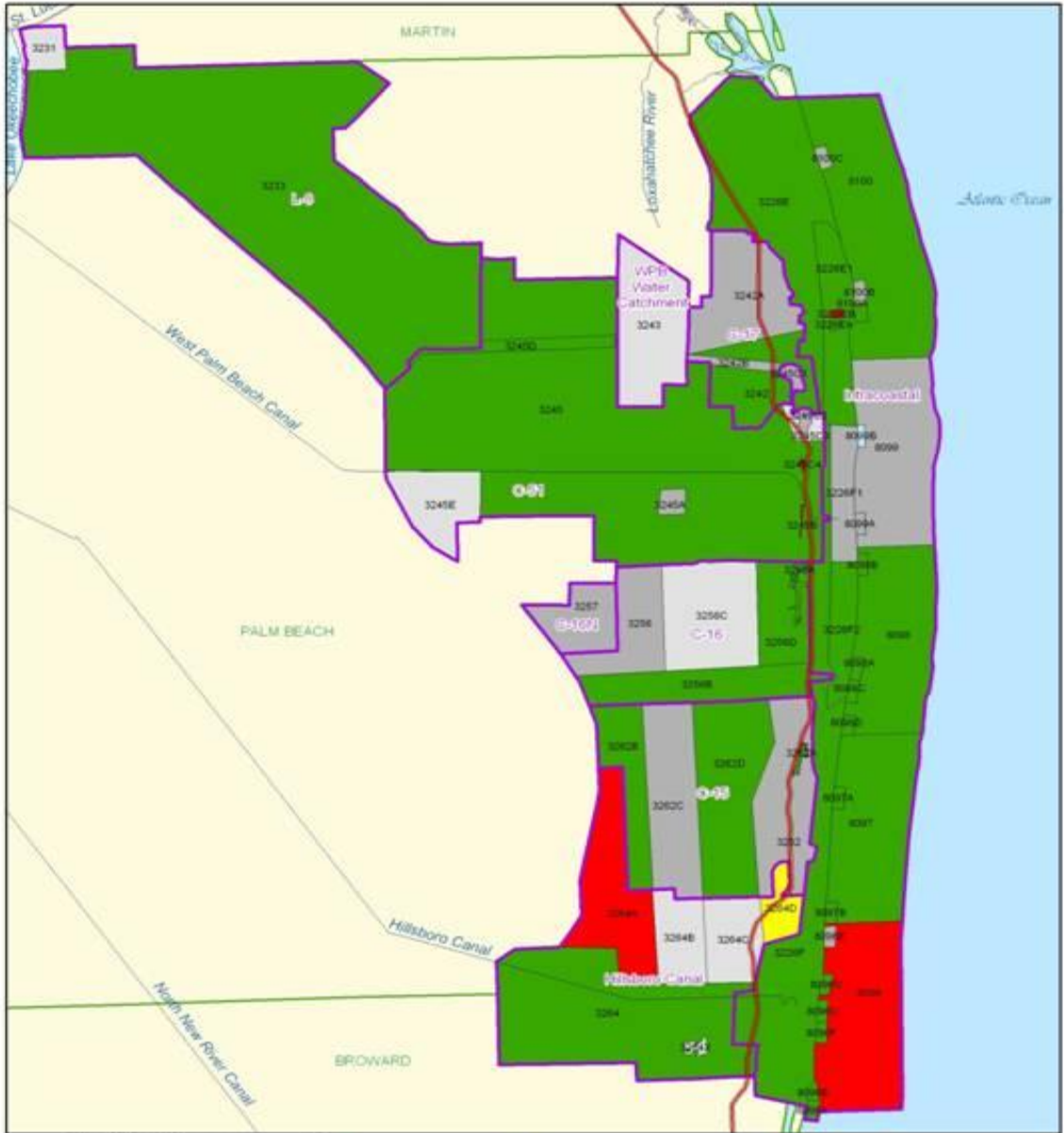


Figure 1.2 Lake Worth Lagoon Watershed Basins



**Lake Worth Lagoon  
Palm Beach Coast  
Bacteria**

0 1.25 2.5 5 7.5 10 Miles

Web page: [www.florida.gov](http://www.florida.gov)  
 Bureau of Environmental Protection, Division of Environmental Assessment and Restoration  
 File: <http://www.florida.gov>  
 For more information, contact: [water@florida.gov](mailto:water@florida.gov) or [888-324-6262](tel:888-324-6262)  
 or [water@florida.gov](mailto:water@florida.gov)

- Interstates
- Planning Units
- WBIDs
- Water Features
- County Boundaries

<ul style="list-style-type: none"> <li>Category 2: Allowing some designated uses</li> <li>Category 3: No data or information to determine if any designated use is attained</li> <li>Category 4: Insufficient data to determine if any designated use is attained</li> <li>Category 5: Water body meets planned or desired use and is potentially proposed for use as more designated use</li> <li>Category 6a: Impaired for use or more designated use and the TMDL is complete</li> </ul>	<ul style="list-style-type: none"> <li>Category 6b: Impaired for use or more designated use, but no TMDL required because an existing or proposed pollution control mechanism provides reasonable assurance attainment for use or more designated use, but no TMDL will be developed because the impairment is not caused by a pollutant for which the TMDL will be developed</li> <li>Category 6c: Impaired, but recent or ongoing restoration activities are underway to restore the designated use</li> <li>Category 7: Water Quality Standards not attained under current management TMDL, nonpoint and TMDL List</li> </ul>
---	--

